

### DESIGN SPECIFICATIONS:

THE EXTERIOR APPEARANCE OF BUILDS IN THESE PLANS IS FOR DESIGN REFERENCE ONLY. ACTUAL COLORS AND FINISHES ARE SUBJECT TO VARIATION DUE TO NATURAL LIGHT AND MATERIAL FACTORS. THE MATERIAL, COLOR, AND HARDWARE HAVE BEEN SELECTED FOR THE BEST ENGINEERING SOLUTION WHILE REMAINING WITHIN THE APPROVED BUDGET.

### DIMENSION SPECIFICATIONS:

DIMENSIONS ARE BASED ON CONSTRUCTION BLUE PRINTS. IT IS MANDATORY FOR THE CONTRACTOR/INSTALLER TO PERFORM A THOROUGH SECOND VERIFICATION OF ALL CRITICAL SITE DIMENSIONS PRIOR TO FABRICATION OR COMMENCING WORK. THE DESIGNER IS NOT RESPONSIBLE FOR ERRORS RESULTING FROM UNVERIFIED DIMENSIONS.

### ACCESS TO PRODUCT SPECS AND 3D VISUALIZATION:

THIS SET OF DRAWINGS CONTAINS HYPERLINKS HIGHLIGHTED IN YELLOW. CLICKING ON A HIGHLIGHTED NOTE WILL DIRECT YOU TO THE PRODUCT SPECIFICATION WEBPAGE. ADDITIONALLY, THE "3D MODEL LINK" HYPERLINK WILL OPEN A WEBPAGE CONTAINING BOTH A 3D RENDERED VIDEO PRESENTATION AND AN INTERACTIVE, NAVIGABLE 3D MODEL.

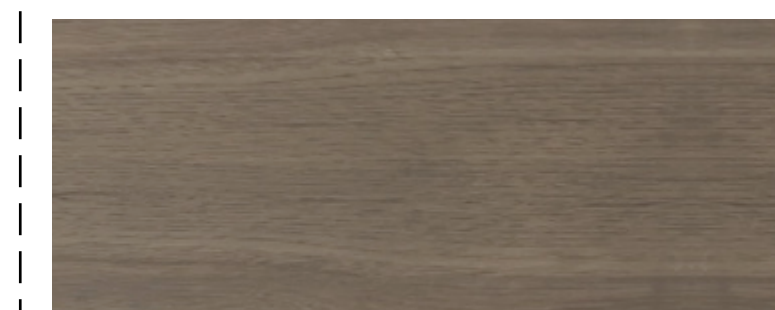
[3D MODEL LINK](#)

### SHOWROOM SET

- TWIN SIZE BED FRAME + HEADBOARD
  - 2 FLOATING NIGHT STANDS
- TO BE WALNUT + CUSTOM STAIN COLOR
- TV LIFT CUSTOM FURNITURE: PAINT AND GLAZE

NOT INCLUDED IN PRICING AND/OR PROVIDED BY OTHERS OR VIA AN APPROVED TIME AND MATERIAL AGREEMENT

- MOVING AND STORING OF PERSONAL ITEMS AND FURNITURE
- PERMITTING
- FRAMING
- ELECTRICAL
- LIGHTING
- PLUMBING
- INSULATION
- DRYWALL
- WALL OR CEILING PAINT
- HOUSE BASE & CROWN
- FLOORING
- COUNTER TOPS
- PLUMBING FIXTURES
- DECORATIVE LIGHTING FIXTURES
- DECORATIVE HARDWARE
- INTERIOR DOORS
- DOOR HARDWARE
- FIRE STOPS IF NEEDED
- TO CODE ITEMS THAT MAY BE NEEDED



**BED + NIGHT STANDS:**  
WALNUT + SHADOW STAIN  
(STAIN TO BE DETERMINED)

[STAIN REFERENCE LINK](#)

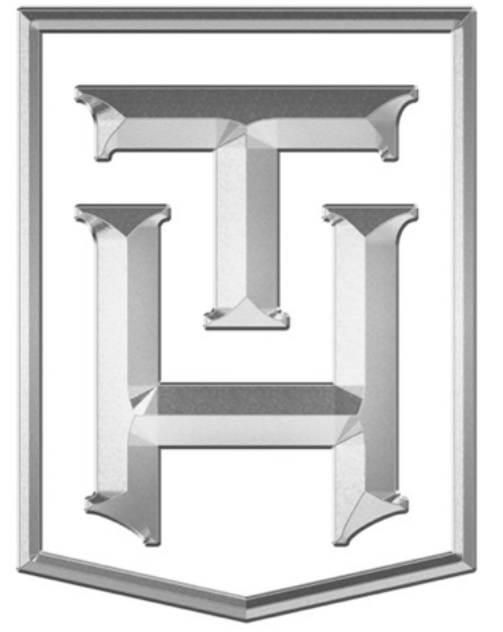


**TV LIFT FURNITURE:**  
PAINT AND GLAZE (VENETO)  
(PAINT AND GLAZE TBD)

[COLOR REFERENCE LINK](#)



**A** PERSPECTIVE VIEW  
**1** Scale: NO SCALE



TRULY  
HANDY

28280 Old 41 Rd, Unit M7  
Bonita Springs, FL, 34135  
Tel: 239-221-9151

## LIAISON SHOWROOM

**CLIENT**  
Steve Weber  
Liaison Technology Group  
sweber@liaisontechgroup.com  
5661 Independence Cir #6  
Fort Myers, FL 33912

**DESIGNER**  
Eduardo Beluco  
eduardo@trulyhandy.com

**PROJECT**  
**SHOWROOM**

**NOTES:**

**DATE:** 03/17/26

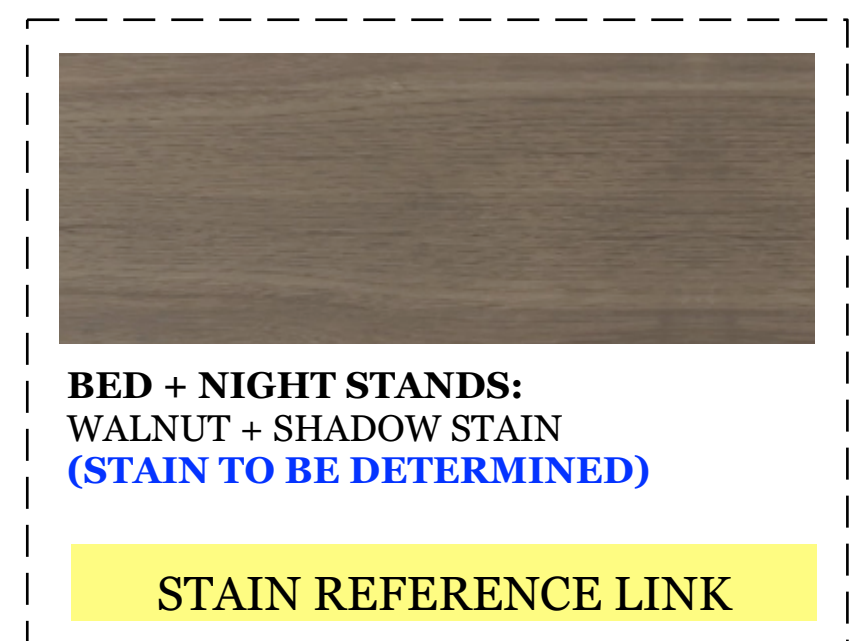
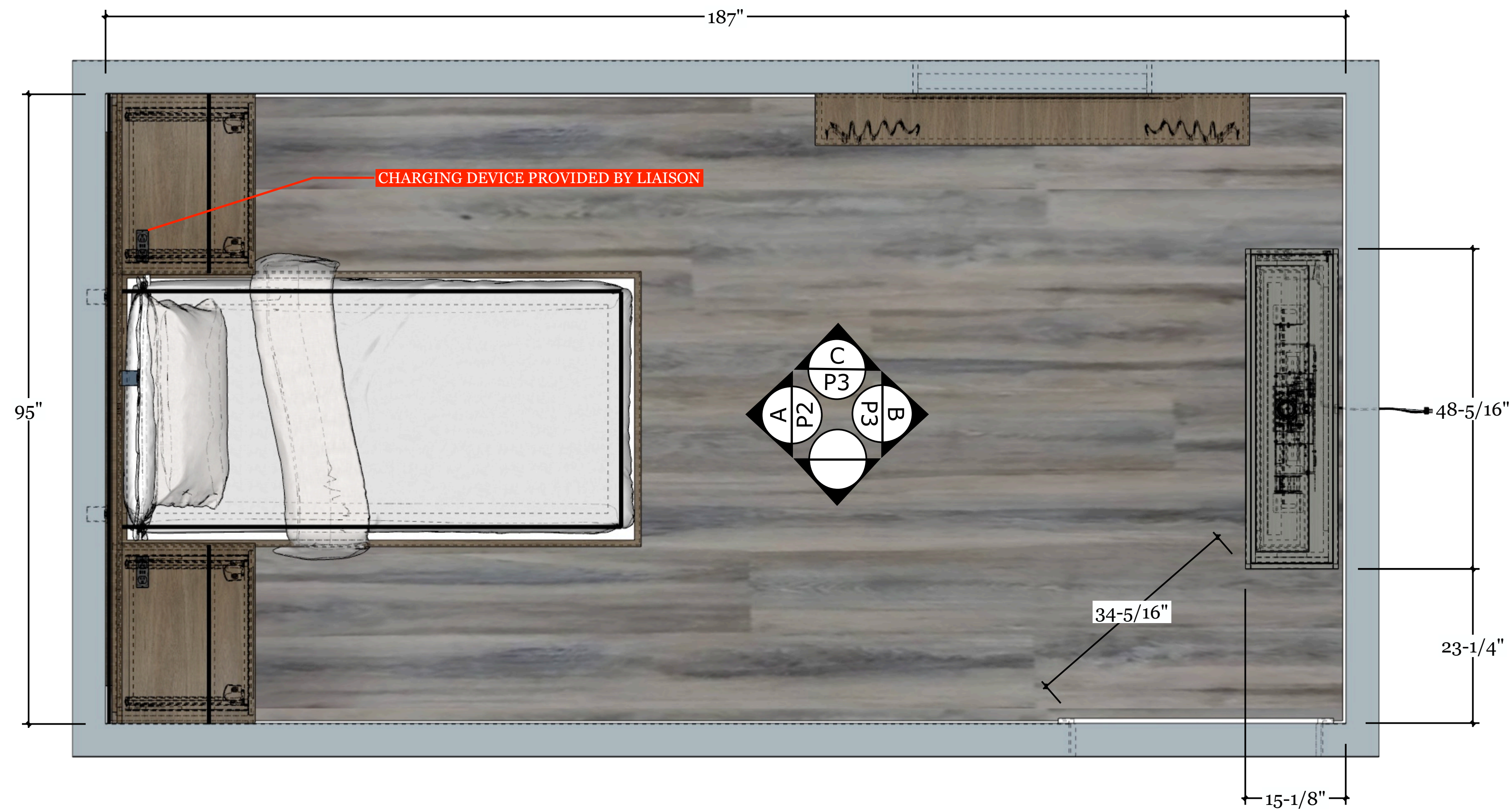
**APPROVAL SIGNATURE:**

**APPROVAL STATUS:**  
**PENDING**

**SCHEDULING DISCLAIMER:**  
All preliminary schedules are created based on approved drawings. Schedules will be automatically adjusted to reflect the final approval date. We will notify everyone of the updated timeline as soon as available. Any delays in the approval of drawings and finishes will potentially delay the project delivery / install date.

Truly Handy LLC makes no representation or warranties, express or implied, with respect to the reuse of the data provided herewith, regardless of its format or the means of its transmission. There is no guarantee or representation to the user as to the accuracy, currency, suitability or reliability of this data for any purpose. The user accepts the data "as is", and assumes all risks associated with its use. By acceptance of this data, the user agrees not to transmit this data or provide access or any part of it to another party unless the user shall include with the data a copy of this disclaimer. Truly Handy LLC assumes no responsibility for actual or consequential damage incurred as a result of any user's reliance on this data. Final engineering subject to change without notice.

**PAGE:**



**TRULY  
HANDY**

28280 Old 41 Rd, Unit M7  
Bonita Springs, FL, 34135  
Tel: 239-221-9151

**LIAISON  
SHOWROOM**

**CLIENT**  
Steve Weber  
Liaison Technology Group  
sweber@liaisontechgroup.com  
5661 Independence Cir #6  
Fort Myers, FL 33912

**DESIGNER**  
Eduardo Beluco  
eduardo@trulyhandyllc.com

**PROJECT**  
**BED SET**

**NOTES:**

**DATE: 03/17/26**

**APPROVAL SIGNATURE:**

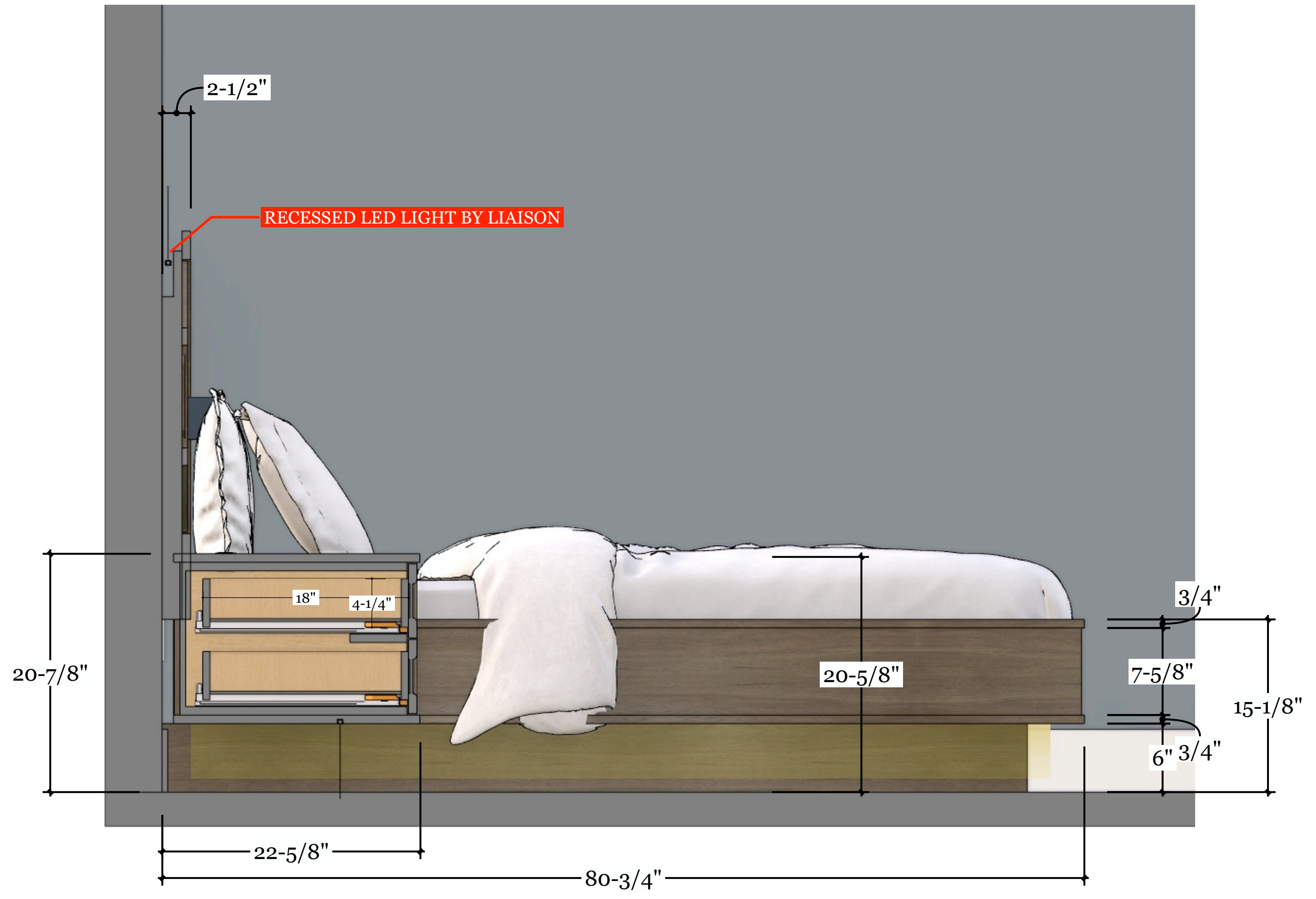
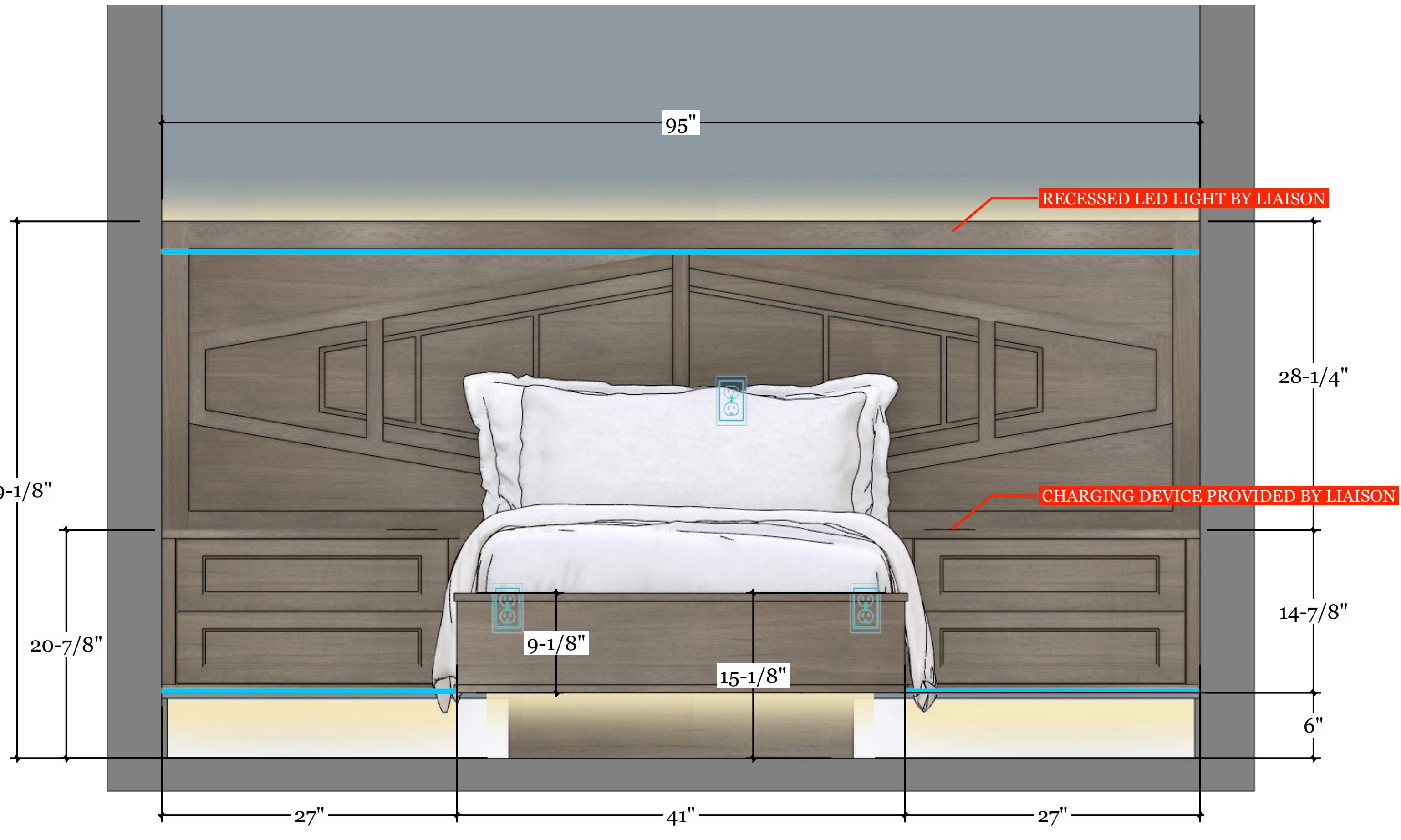
**APPROVAL STATUS:**  
**PENDING**

**SCHEDULING DISCLAIMER:**  
All preliminary schedules are created based on approved drawings. Schedules will be automatically adjusted to reflect the final approval date. We will notify everyone of the updated timeline as soon as available. Any delays in the approval of drawings and finishes will potentially delay the project delivery / install date.

Truly Handy LLC makes no representation or warranties, express or implied, with respect to the reuse of the data provided herewith, regardless of its format or the means of its transmission. There is no guarantee or representation to the user as to the accuracy, currency, suitability or reliability of this data for any purpose. The user accepts the data "as is", and assumes all risks associated with its use. By acceptance of this data, the user agrees not to transmit this data or provide access or any part of it to another party unless the user shall include with the data a copy of this disclaimer. Truly Handy LLC assumes no responsibility for actual or consequential damage incurred as a result of any user's reliance on this data. Final engineering subject to change without notice.

**PAGE:**

**PV** PLAN VIEW  
**1** Scale: 1" = 1'-0"



**ELV** ELEVATION A - BED SET  
**A** Scale: 1-1/2" = 1'-0"

**SEC** SIDE SECTION - BED SET  
**A** Scale: 1-1/2" = 1'-0"



**BED + NIGHT STANDS:**  
 WALNUT + SHADOW STAIN  
 (STAIN TO BE DETERMINED)

[STAIN REFERENCE LINK](#)



**TRULY  
HANDY**

28280 Old 41 Rd, Unit M7  
 Bonita Springs, FL, 34135  
 Tel: 239-221-9151

**LIAISON  
SHOWROOM**

**CLIENT**  
 Steve Weber  
 Liaison Technology Group  
 sweber@liaisontechgroup.com  
 5661 Independence Cir #6  
 Fort Myers, FL 33912

**DESIGNER**  
 Eduardo Beluco  
 eduardo@trulyhandyllc.com

**PROJECT**  
**BED SET**

**NOTES:**

**DATE: 03/17/26**

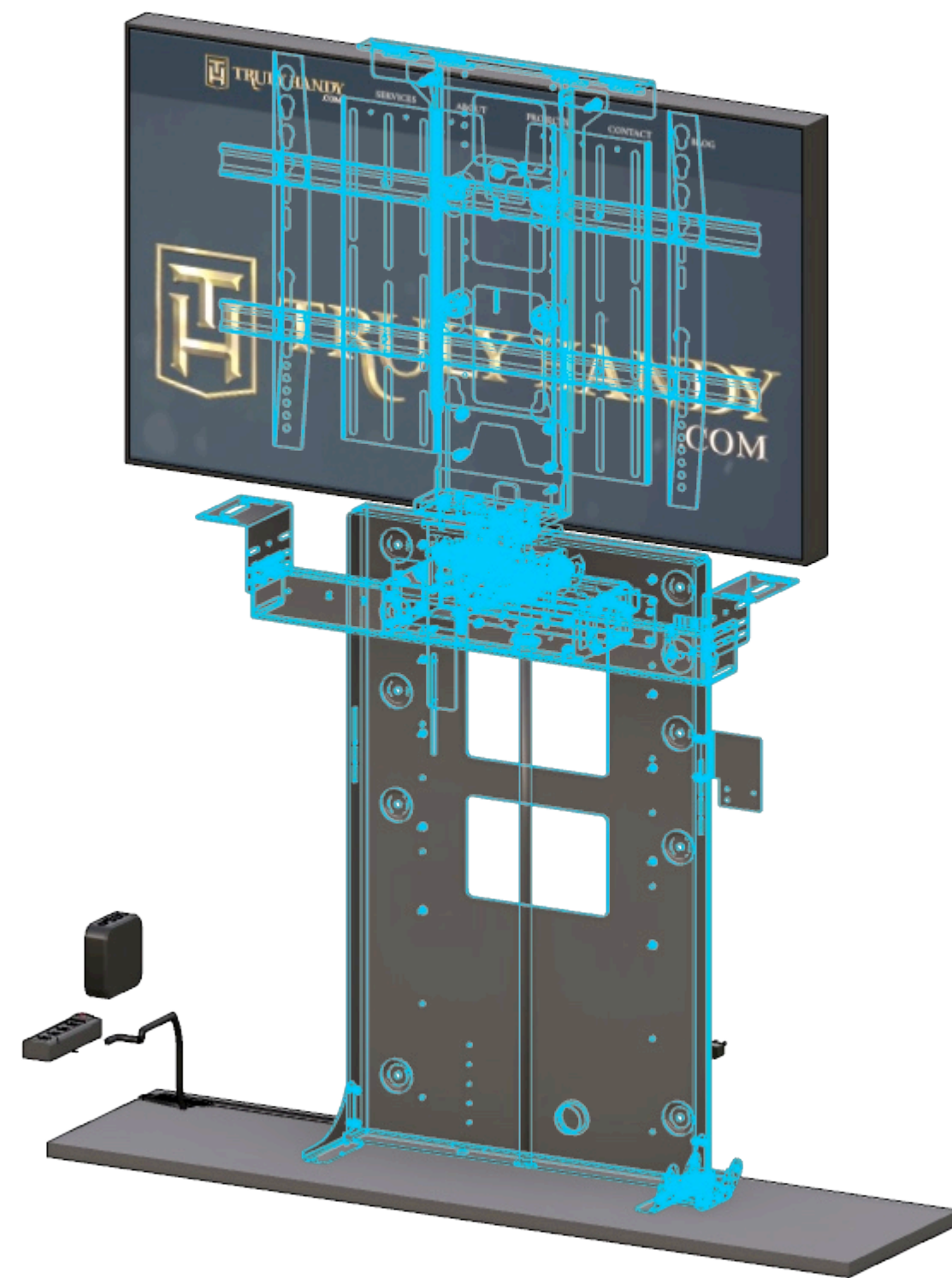
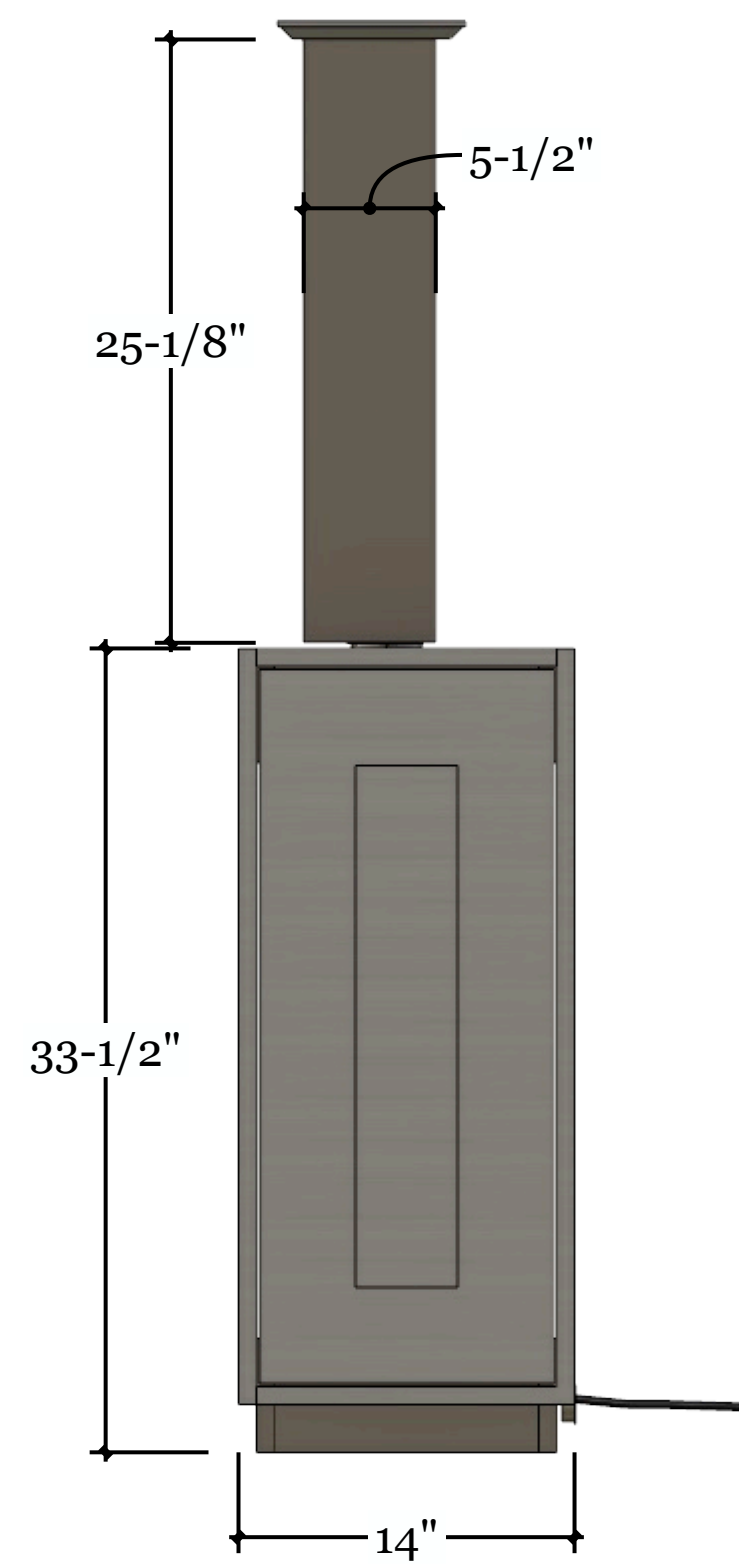
**APPROVAL SIGNATURE:**

**APPROVAL STATUS:**  
**PENDING**

**SCHEDULING DISCLAIMER:**  
 All preliminary schedules are created based on approved drawings. Schedules will be automatically adjusted to reflect the final approval date. We will notify everyone of the updated timeline as soon as available. Any delays in the approval of drawings and finishes will potentially delay the project delivery / install date.

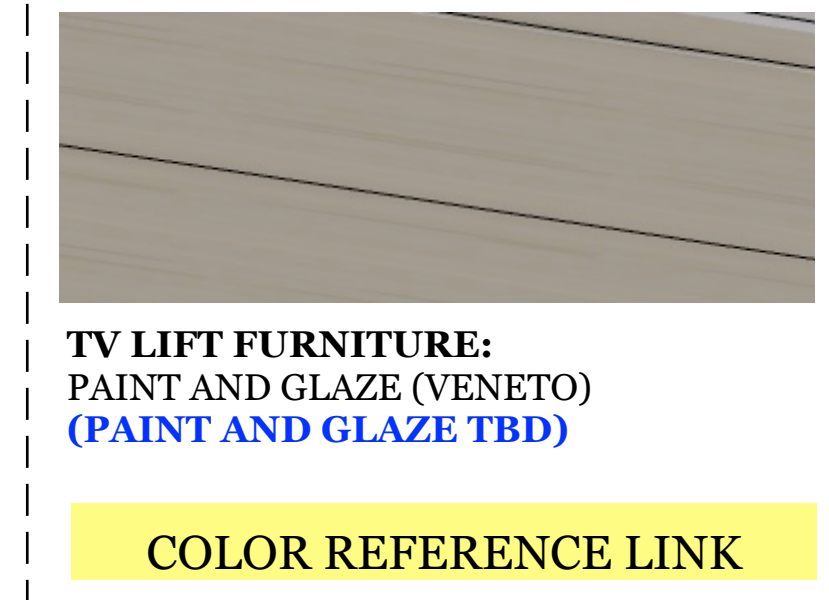
Truly Handy LLC makes no representation or warranties, express or implied, with respect to the reuse of the data provided herewith, regardless of its format or the means of its transmission. There is no guarantee or representation to the user as to the accuracy, currency, suitability or reliability of this data for any purpose. The user accepts the data "as is", and assumes all risks associated with its use. By acceptance of this data, the user agrees not to transmit this data or provide access or any part of it to another party unless the user shall include with the data a copy of this disclaimer. Truly Handy LLC assumes no responsibility for actual or consequential damage incurred as a result of any user's reliance on this data. Final engineering subject to change without notice.

**PAGE:**



SONY BRAVIA 3 TV LINK

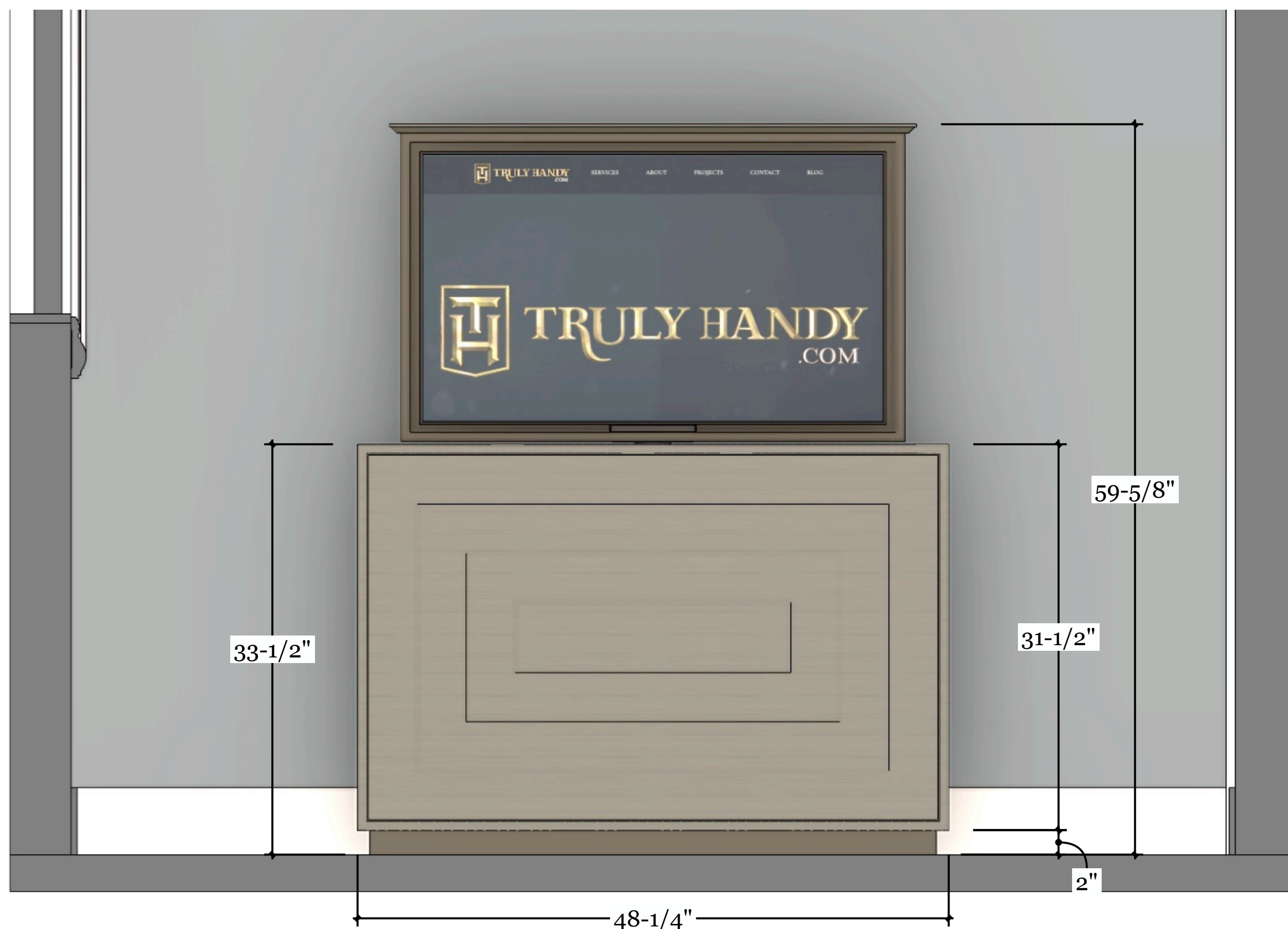
LSM4 MECHANISM LINK



TV LIFT FURNITURE:  
PAINT AND GLAZE (VENETO)  
(PAINT AND GLAZE TBD)

COLOR REFERENCE LINK

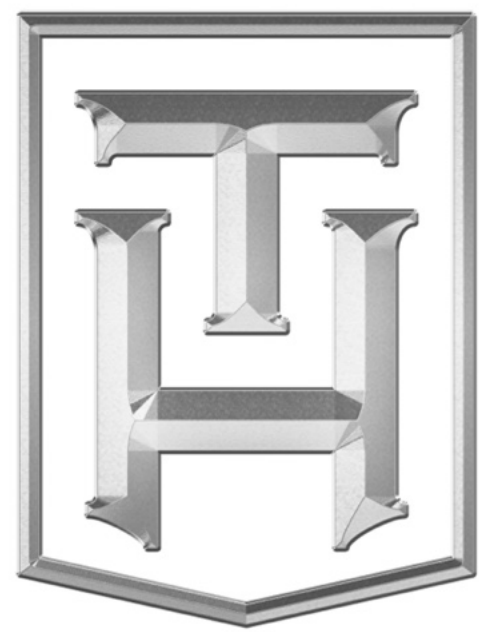
**SD** SIDE VIEW - TV LIFT  
**B** Scale: 1-1/2" = 1'-0"



**ELV** ELEVATION B - TV LIFT FURNITURE  
**B** Scale: 1-1/2" = 1'-0"



**ISO** ISOMETRIC VIEW  
**B** Scale: 3" = 1'-0"



TRULLY  
HANDY

28280 Old 41 Rd, Unit M7  
Bonita Springs, FL, 34135  
Tel: 239-221-9151

**LIAISON  
SHOWROOM**

**CLIENT**  
Steve Weber  
Liaison Technology Group  
sweber@liaisontechgroup.com  
5661 Independence Cir #6  
Fort Myers, FL 33912

**DESIGNER**  
Eduardo Beluco  
eduardo@trullyhandyllc.com

**PROJECT**  
**TV LIFT  
FURNITURE**

**NOTES:**

**DATE: 03/17/26**

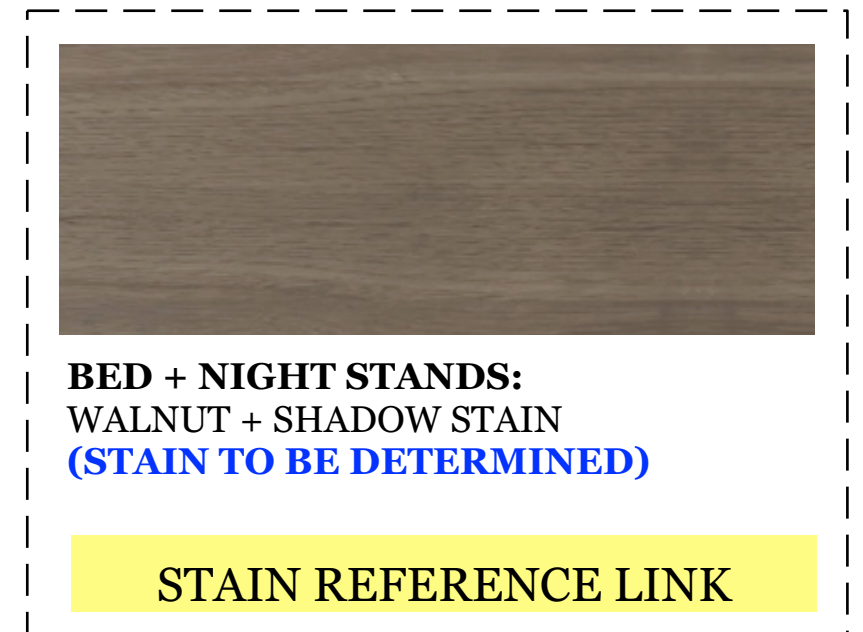
**APPROVAL SIGNATURE:**

**APPROVAL STATUS:**  
**PENDING**

**SCHEDULING DISCLAIMER:**  
All preliminary schedules are created based on approved drawings. Schedules will be automatically adjusted to reflect the final approval date. We will notify everyone of the updated timeline as soon as available. Any delays in the approval of drawings and finishes will potentially delay the project delivery / install date.

Trully Handy LLC makes no representation or warranties, express or implied, with respect to the reuse of the data provided herewith, regardless of its format or the means of its transmission. There is no guarantee or representation to the user as to the accuracy, currency, suitability or reliability of this data for any purpose. The user accepts the data "as is", and assumes all risks associated with its use. By acceptance of this data, the user agrees not to transmit this data or provide access or any part of it to another party unless the user shall include with the data a copy of this disclaimer. Trully Handy LLC assumes no responsibility for actual or consequential damage incurred as a result of any user's reliance on this data. Final engineering subject to change without notice.

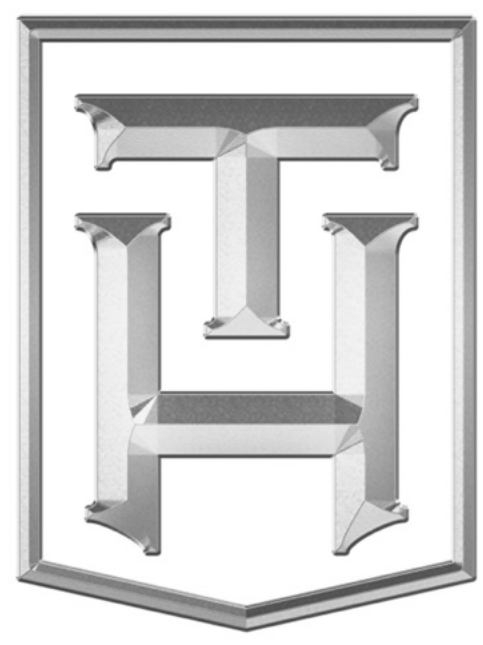
**PAGE:**



**ISO** DRAPERY VALANCE - NOT ON ORIGINAL SCOPE / WALNUT + STAIN  
**C** Scale: 3" = 1'-0"



**ELV** ELEVATION C - DRAPERY VALANCE - NOT ON ORIGINAL SCOPE / WALNUT + STAIN  
**C** Scale: 1-1/2" = 1'-0"



**TRULY  
HANDY**

28280 Old 41 Rd, Unit M7  
Bonita Springs, FL, 34135  
Tel: 239-221-9151

**LIAISON  
SHOWROOM**

**CLIENT**  
Steve Weber  
Liaison Technology Group  
sweber@liaisontechgroup.com  
5661 Independence Cir #6  
Fort Myers, FL 33912

**DESIGNER**  
Eduardo Beluco  
eduardo@trulyhandyllc.com

**PROJECT**  
**WINDOW VALANCE**

**NOTES:**

**DATE: 03/17/26**

**APPROVAL SIGNATURE:**

**APPROVAL STATUS:**  
**PENDING**

**SCHEDULING DISCLAIMER:**  
All preliminary schedules are created based on approved drawings. Schedules will be automatically adjusted to reflect the final approval date. We will notify everyone of the updated timeline as soon as available. Any delays in the approval of drawings and finishes will potentially delay the project delivery / install date.

Truly Handy LLC makes no representation or warranties, express or implied, with respect to the reuse of the data provided herewith, regardless of its format or the means of its transmission. There is no guarantee or representation to the user as to the accuracy, currency, suitability or reliability of this data for any purpose. The user accepts the data "as is", and assumes all risks associated with its use. By acceptance of this data, the user agrees not to transmit this data or provide access or any part of it to another party unless the user shall include with the data a copy of this disclaimer. Truly Handy LLC assumes no responsibility for actual or consequential damage incurred as a result of any user's reliance on this data. Final engineering subject to change without notice.

**PAGE:**